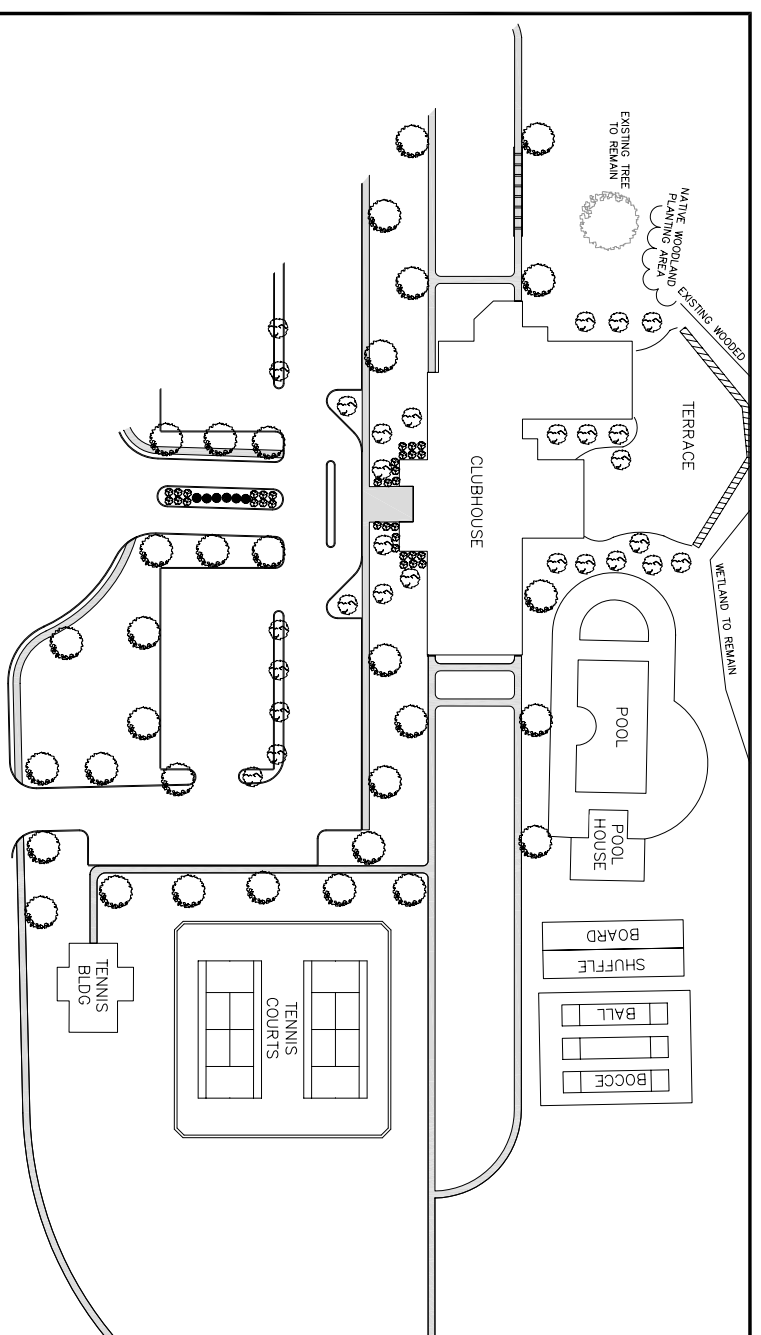
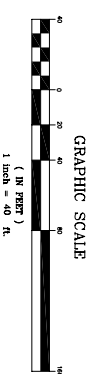
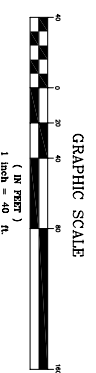


TYPICAL CONDO AND TOWNHOUSE UNIT
LANDSCAPING PLAN



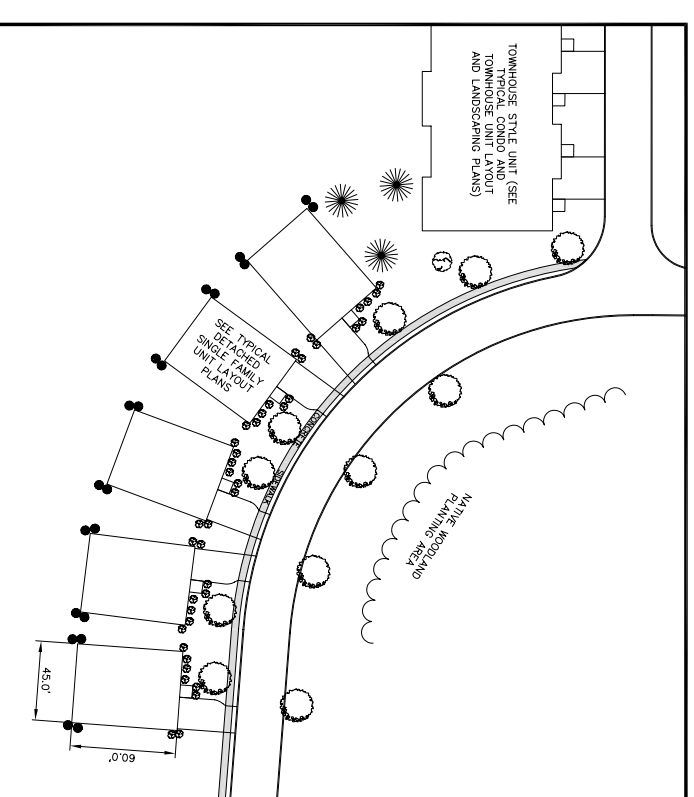
CLUBHOUSE LANDSCAPING PLAN



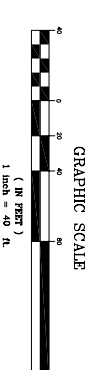
PLANTING LEGEND

SYMBOL	PLANT	SIZE
○	DECIDUOUS SHADE/STREET TREE - RED MAPLE, PIN & RED OAK, GREENSPRING UNCLE, BLACK TUPELO	2" CAL.
⊕	ORNAMENTAL FLOWERING TREES - CRABAPPLES, FLOWERING CHERRY, HAWTHORN	2" CAL.
☼	EVERGREEN TREES - WHITE PINE, NORWAY AND COLORADO SPRUCE	6"-8" HIGH
⊙	FRONT YARD SHRUBS - LOW TO MEDIUM - BOWWOOD, JAPANESE ANDROEDA, POTENTILLA, SPREADING JASMINE, JAPANESE HOLLY, COTONEASTER	2 GAL.
●	LARGER FLOWERING SHRUBS - SIDE & REAR YARD PLANTING - VIRGINIA FORSYTHIA, WIGWAG, WITCHHAZEL, SPIREA	2 GAL.

NOTE: PLANTING DESIGNS DONE BY ROBERT G. TORGERSON, I.A., CPESC, LANDSCAPE ARCHITECTURE & ENVIRONMENTAL SCIENCES, N.Y.S. LA LICENSE #451



TYPICAL SINGLE FAMILY UNIT
LANDSCAPING PLAN



COPIES FROM THE ORIGINAL OF THIS DOCUMENT NOT APPROVED WITH AN ORIGINAL OF THE PROFESSIONAL ENGINEER'S AND/OR LAND SURVEYOR'S STAMP OR EMBOSSED SEAL SHALL NOT BE CONSIDERED VALID. THIS DOCUMENT IS A STATEMENT OF SECTION 7209-2 OF THE NEW YORK STATE ENVIRONMENTAL CONSERVATION LAW.

COPYRIGHT 2008, LANC & TULLY, P.C.
LANC & TULLY
ENGINEERING AND SURVEYING, P.C.
P.O. Box 4877, Rt. 207
KATONAH, NY 12534
(845) 336-0100

TYPICAL LANDSCAPING PLANS
PREPARED FOR LOT 10

CORNWALL COMMONS

TOWN OF CORNWALL
ORANGE COUNTY, NEW YORK

DATE: MARCH 24, 2008
SCALE: 1/8" = 1'-0"

DATE: JUNE 2, 2008
SCALE: 1/8" = 1'-0"