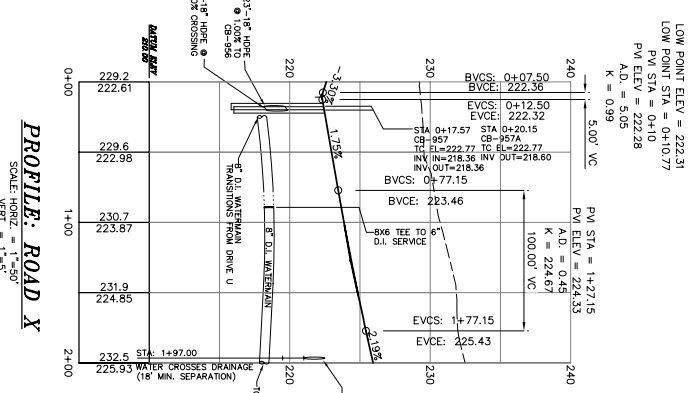
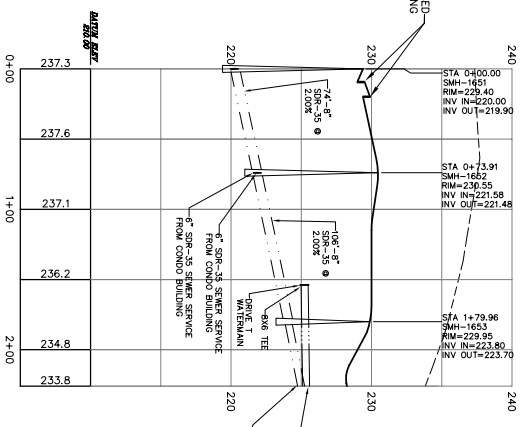


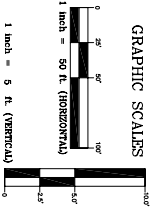
PVI STA = 2+85.51  
PVI ELEV = 224.43  
A.D. = -0.82  
K = 24.02  
200.00' VC

PVI STA = 5+45.05  
PVI ELEV = 227.03  
A.D. = 2.74  
K = 30.53  
75.00' VC



LOW POINT ELEV = 222.31  
LOW POINT STA = 0+10.77  
PVI STA = 0+10  
PVI ELEV = 222.28  
A.D. = 5.05  
K = 0.89  
5.00' VC

PVI STA = 1+27.15  
PVI ELEV = 224.53  
A.D. = 0.47  
K = 224.67  
100.00' VC



- LEGEND**
- PROPOSED GRADE
  - EXISTING GRADE
  - PROPOSED WATER PIPE
  - PROPOSED SEWER PIPE
  - PROPOSED DRAINAGE PIPE
  - PROPOSED WATER VALVE/CONNECTION
  - PROPOSED DRAINAGE CATCH BASIN
  - PROPOSED SEWER MANHOLE
  - PROPOSED SEWER PIPE CROSSING/CONNECTION
  - PROPOSED DRAINAGE PIPE CROSSING/CONNECTION

LANC & TULLY  
ENGINEERING AND SURVEYING, P.C.  
P.O. Box 4871, Rt. 287  
(609) 261-7700  
FAX: (609) 261-7700

TOWN OF CORNWALL  
CORNWALL COMMONS  
ORANGE COUNTY, NEW YORK

ROAD AND UTILITY PROFILES  
PREPARED FOR

JUNE 2, 2008

DATE: JUNE 2, 2008  
DRAWN BY: J.S. WERTS  
CHECKED BY: J.S. WERTS  
SCALE: 1"=50'  
PROJECT NO.: 0148-01

COPIES FROM THE ORIGINAL OF THIS DOCUMENT NOT MARKED WITH AN ORIGINAL OF THE PROFESSIONAL ENGINEER'S AND/OR LAND SURVEYOR'S STAMP OR TRUE COPIES SHALL NOT BE CONSIDERED VALID. UNAUTHORIZED ALTERATION OR ADDITION TO THIS DOCUMENT IS A VIOLATION OF SECTION 7209-2 OF THE NEW YORK STATE EDUCATION LAW.