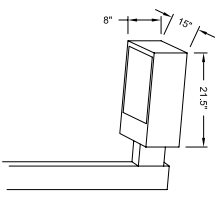
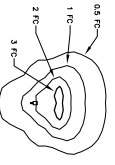


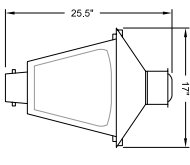
- NOTE:**
1. THIS PLAN IS PROVIDED ONLY AS A TYPICAL DEPICTION OF PROPOSED SITE LIGHTING LAYOUT. ACTUAL SITE LAYOUT MAY VARY BASED UPON THE INSTALLATION REQUIREMENTS OF CENTRAL HUDSON GAS & ELECTRIC CORPORATION AND OTHER FIELD CONSTRAINTS AT THE TIME OF CONSTRUCTION.
 2. ALL STREET LUMINAIRES WILL BE PROVIDED BY CENTRAL HUDSON GAS & ELECTRIC UNDER THE "LEASED LIGHTING" PROGRAM. LUMINAIRES WILL BE SUPPLIED, OWNED AND OPERATED BY CENTRAL HUDSON GAS & ELECTRIC. DETAILS OF INSTALLATION TO BE DETERMINED BY CENTRAL HUDSON.
 3. RESIDENTIAL BUILDING MOUNTED LUMINAIRES DERIVED & CALCULATED ON THESE PLANS ARE TYPICAL AND ARE NOT MEANT TO REPRESENT THE PERFORMANCE OF ANY SPECIFIC MANUFACTURER'S PRODUCT. MANUFACTURER'S PLANS AND ACTUAL FIELD PERFORMANCE MAY VARY. THE CALCULATIONS SHOWN USE MANUFACTURER DATA TAKEN UNDER LABORATORY CONTROLLED CONDITIONS IN ACCORDANCE WITH ILLUMINATING ENGINEERING SOCIETY FIELD CONDITIONS APPROVED METHODS. PERFORMANCE OF LUMINAIRES MAY VARY DUE TO UNCONTROLLABLE FIELD CONDITIONS.
 4. CALCULATION VALUES SHOWN ON THIS PLAN ARE TAKEN ON A HORIZONTAL PLANE AT GROUND LEVEL, USING A LIGHT LOSS FACTOR OF 0.75 FOR EACH LUMINAIRE. TOPOGRAPHICAL INFORMATION HAS NOT BEEN ACCOUNTED FOR IN THESE CALCULATIONS.
 5. LIGHTING CALCULATIONS SHOWN FOR LUMINAIRES "A," & "B" ARE BASED UPON DATA FILES PROVIDED BY LUMINAIRE MANUFACTURERS OFFERING PRODUCTS SIMILAR TO CENTRAL HUDSON GAS & ELECTRIC CORPORATION. MANUFACTURER'S DATA IS USED TO DETERMINE THE LIGHT OUTPUT OF THE LUMINAIRES. MANUFACTURER'S PLANS AND ACTUAL FIELD PERFORMANCE MAY VARY. THE CALCULATIONS SHOWN USE MANUFACTURER DATA TAKEN UNDER LABORATORY CONTROLLED CONDITIONS IN ACCORDANCE WITH ILLUMINATING ENGINEERING SOCIETY FIELD CONDITIONS APPROVED METHODS. PERFORMANCE OF LUMINAIRES MAY VARY DUE TO UNCONTROLLABLE FIELD CONDITIONS.



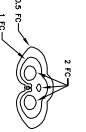
TYPICAL CUT-OFF RECTANGULAR STYLE LUMINAIRE
DETAIL PROVIDED FOR ILLUSTRATIVE PURPOSES ONLY
ACTUAL LUMINAIRE PROVIDED BY
CENTRAL HUDSON GAS & ELECTRIC
TYPE A - TYPICAL MOUNTING HEIGHT = 30'
NOT TO SCALE



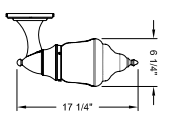
TYPICAL CUT-OFF RECTANGULAR STYLE LUMINAIRE
AS PROVIDED BY CENTRAL HUDSON GAS & ELECTRIC
W/ 175 WATT MH LAMP MOUNTED AT 30'
PHOTOMETRIC DIAGRAM
SCALE: 1" = 50'



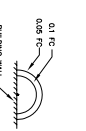
TYPICAL COLONIAL POST-TOP STYLE LUMINAIRE
DETAIL PROVIDED FOR ILLUSTRATIVE PURPOSES ONLY
ACTUAL LUMINAIRE PROVIDED BY
CENTRAL HUDSON GAS & ELECTRIC
TYPE B - TYPICAL MOUNTING HEIGHT = 8'
NOT TO SCALE



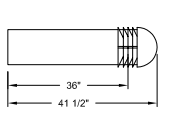
TYPICAL COLONIAL POST-TOP STYLE LUMINAIRE
AS PROVIDED BY CENTRAL HUDSON GAS & ELECTRIC
W/ 70 WATT HPS LAMP MOUNTED AT 12'
PHOTOMETRIC DIAGRAM
SCALE: 1" = 50'



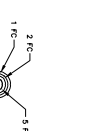
TYPICAL BUILDING MOUNTED DECORATIVE COACH LIGHT
DETAIL PROVIDED FOR ILLUSTRATIVE PURPOSES ONLY
ACTUAL LUMINAIRE TO BE SELECTED AND PROVIDED
BY THE OWNER OR CONTRACTOR
TYPE C - TYPICAL MOUNTING HEIGHT = 8'
NOT TO SCALE



TYPICAL BUILDING MOUNTED DECORATIVE COACH LIGHT
AS PROVIDED BY CENTRAL HUDSON GAS & ELECTRIC
W/ 50 WATT INCANDESCENT LAMP MOUNTED AT 8'
PHOTOMETRIC DIAGRAM
SCALE: 1" = 50'

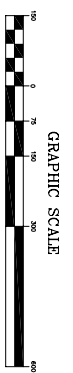


TYPICAL BOLLARD LUMINAIRE
DETAIL PROVIDED FOR ILLUSTRATIVE PURPOSES ONLY
ACTUAL LUMINAIRE TO BE SELECTED
BY THE OWNER OR CONTRACTOR
TYPE D - LAMP CENTER AT 36"
NOT TO SCALE



TYPICAL BOLLARD LUMINAIRE
AS PROVIDED BY CENTRAL HUDSON GAS & ELECTRIC
W/ 50 WATT HPS LAMP MOUNTED AT 36"
PHOTOMETRIC DIAGRAM
SCALE: 1" = 50'

LUMINAIRE SCHEDULE							
SYMBOL	QTY	LUMINAIRE TYPE	DESCRIPTION	MOUNTING HEIGHT	LAMP	LUMENS PER LAMP	LF
A	5	CUT-OFF RECTANGULAR	ONE CUT-OFF RECTANGULAR STYLE LUMINAIRE W/ 175 WATT MH LAMP MOUNTED AT 30' HIGH	30'	(1) 170W CLEAR MH	14000	0.75
B	58	POST-TOP	ONE COLONIAL POST-TOP STYLE LUMINAIRE W/ 70 WATT HPS LAMP MOUNTED AT 12' HIGH	12'	(1) 70W CLEAR HPS	3500	0.75
C	N/A	482	RESIDENTIAL COACH LIGHT	8'	(1) 50W MOUNTED INCANDESCENT	500	0.75
D	85	BOLLARD	ONE 52" BOLLARD LUMINAIRE W/ 50 WATT HPS LAMP MOUNTED AT 36' FROM DRIVE	36"	(1) 50W COVERED HPS	3500	0.75



GRAPHIC SCALE
(IN FEET)
1 inch = 100 ft.
1 meter = 3.28 ft.

LANC & TULLY
ENGINEERING AND SURVEYING, P.C.

P.O. Box 4271, Rt. 207
Orange County, New York
(609) 291-5700
(609) 291-5700

OVERALL SUBDIVISION LIGHTING LAYOUT
PLAN PREPARED FOR LOT 10

CORNWALL COMMONS

TOWN OF CORNWALL
ORANGE COUNTY, NEW YORK

DATE	DESCRIPTION
NOVEMBER 14, 2007	DATE OF SUBMISSION
NOVEMBER 28, 2007	DATE OF APPROVAL
MARCH 5, 2008	DATE OF REVISION
MAY 2, 2008	DATE OF REVISION

COPIES FROM THE ORIGINAL OF THIS DOCUMENT NOT MARKED WITH AN ORIGINAL OF THE PROFESSIONAL ENGINEER'S AND/OR LAND SURVEYOR'S STAMP OR EMBOSSED SEAL SHALL NOT BE CONSIDERED VALID. UNAUTHORIZED ALTERATION OR ADDITION TO THIS DOCUMENT IS PROHIBITED. THE NEW YORK STATE EDUCATION LAW.