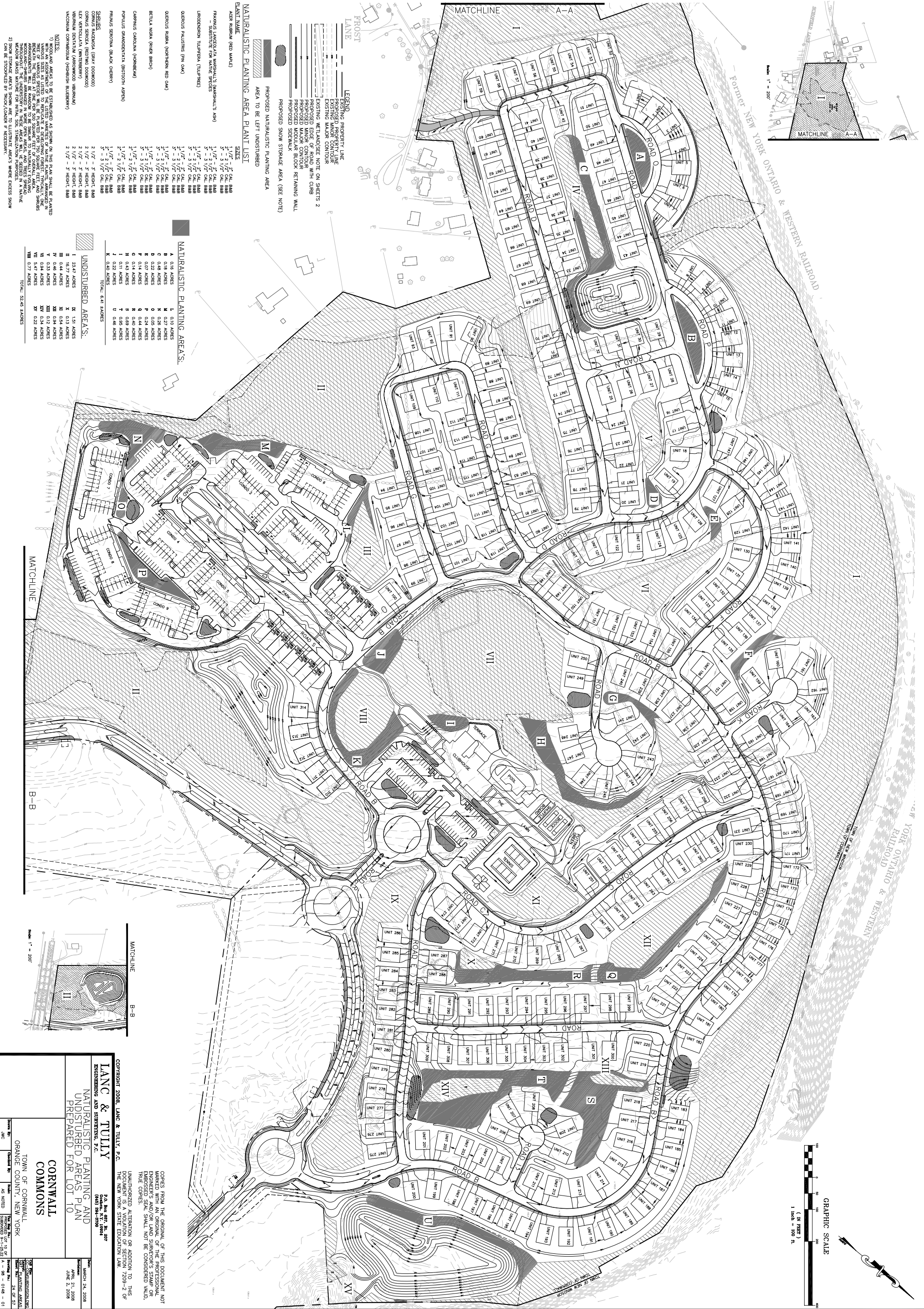
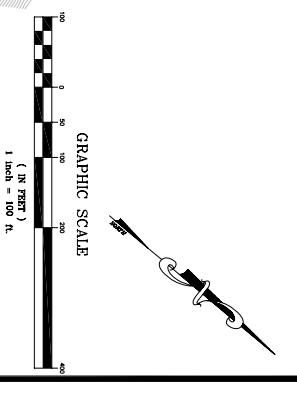


Scale: 1" = 200'



**LEGEND**

- EXISTING PROPERTY LINE
- PROPOSED PROPERTY LINE
- EXISTING MAJOR CONTOUR
- EXISTING WETLAND/SEE NOTE ON SHEET 2
- PROPOSED MINOR CONTOUR
- PROPOSED EDGE OF ROAD WITH CURB
- PROPOSED MODULAR BLOCK RETAINING WALL
- PROPOSED SIDEWALK
- PROPOSED SNOW STORAGE AREA (SEE NOTE)
- AREA TO BE LEFT UNDISTURBED
- PROPOSED NATURALISTIC PLANTING AREA

**NATURALISTIC PLANTING AREA PLANT LIST**

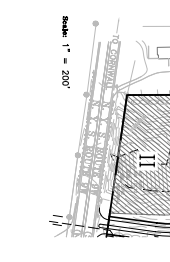
PLANT NAME	SIZES
ACER RUBRA (RED MAPLE)	1 1/2" - 2" CAL. B&B 2" - 3" CAL. B&B 3" - 3 1/2" CAL. B&B
FRAXINUS LANCEolata (WASHBURN'S ASH)	1 1/2" - 2" CAL. B&B 2" - 3" CAL. B&B 3" - 3 1/2" CAL. B&B
LIBODORON FLUMINEA (FLUMINEA)	1 1/2" - 2" CAL. B&B 2" - 3" CAL. B&B 3" - 3 1/2" CAL. B&B
QUERCUS PALATIS (OAK)	1 1/2" - 2" CAL. B&B 2" - 3" CAL. B&B 3" - 3 1/2" CAL. B&B
QUERCUS RUBRA (NORFOLK RED OAK)	1 1/2" - 2" CAL. B&B 2" - 3" CAL. B&B 3" - 3 1/2" CAL. B&B
BETULA NIDA (PAPER BIRCH)	1 1/2" - 2" CAL. B&B 2" - 3" CAL. B&B 3" - 3 1/2" CAL. B&B
CORNUS CANADICA (SPICEBERRY)	1 1/2" - 2" CAL. B&B 2" - 3" CAL. B&B 3" - 3 1/2" CAL. B&B
POPULUS SPANANTICA (BROTHER ASPEN)	1 1/2" - 2" CAL. B&B 2" - 3" CAL. B&B 3" - 3 1/2" CAL. B&B
PRUNUS SEROTINA (BLACK CHERRY)	1 1/2" - 2" CAL. B&B 2" - 3" CAL. B&B 3" - 3 1/2" CAL. B&B
SHIBUYA	2 1/2" - 3" HEIGHT, B&B
CORNUS SERICEA (REDWING DOGWOOD)	2 1/2" - 3" HEIGHT, B&B
VERBENA CRISTATA (HERRINGWOOD VERBENA)	2 1/2" - 3" HEIGHT, B&B
VACUUM COMPOSITION (HERRING ALDERBERRY)	2 1/2" - 3" HEIGHT, B&B

**NATURALISTIC PLANTING AREAS:**

A	0.18 ACRES	L	0.10 ACRES
B	0.18 ACRES	M	0.27 ACRES
C	0.48 ACRES	N	0.28 ACRES
D	0.22 ACRES	O	0.05 ACRES
E	0.07 ACRES	P	0.24 ACRES
F	0.14 ACRES	Q	0.24 ACRES
G	0.14 ACRES	R	0.08 ACRES
H	0.14 ACRES	S	0.08 ACRES
I	0.11 ACRES	T	0.08 ACRES
J	0.22 ACRES	U	0.46 ACRES
K	0.40 ACRES		
	TOTAL: 6.41 ACRES		

**UNDISTURBED AREAS:**

I	2.47 ACRES	X	1.51 ACRES
II	16.77 ACRES	Y	0.13 ACRES
III	0.46 ACRES	Z	0.54 ACRES
IV	0.46 ACRES	AA	0.24 ACRES
V	0.14 ACRES	AB	0.24 ACRES
VI	0.14 ACRES	AC	0.24 ACRES
VII	0.14 ACRES	AD	0.24 ACRES
VIII	0.14 ACRES	AE	0.24 ACRES
IX	0.14 ACRES	AF	0.24 ACRES
X	0.14 ACRES	AG	0.24 ACRES
XI	0.14 ACRES	AH	0.24 ACRES
XII	0.14 ACRES	AI	0.24 ACRES
XIII	0.14 ACRES	AJ	0.24 ACRES
XIV	0.14 ACRES	AK	0.24 ACRES
XV	0.14 ACRES	AL	0.24 ACRES
	TOTAL: 52.45 ACRES		



Scale: 1" = 200'

COPYRIGHT 2008, LANC & TULLY, P.C.  
**LANC & TULLY**  
 ARCHITECTS AND ENGINEERS, P.C.  
 1000 WEST 10TH AVENUE  
 SUITE 200  
 DENVER, CO 80202  
 PHONE: 303.733.1000  
 FAX: 303.733.1001  
 E-MAIL: INFO@LANCANDTULLY.COM

CORNWALL COMMONS  
 TOWN OF CORNWALL  
 ORANGE COUNTY, NEW YORK

DATE: MARCH 24, 2008  
 PREPARED BY: JUNE 21, 2008  
 CHECKED BY: JUNE 2, 2008

UNAUTHORIZED ALTERATION OR ADDITION TO THIS DOCUMENT IS A VIOLATION OF SECTION 7209-2 OF THE NEW YORK STATE EDUCATION LAW.

COPIES FROM THE ORIGINAL OF THIS DOCUMENT NOT BEING REPRODUCED WITHOUT THE WRITTEN PERMISSION OF THE ENGINEER'S AND/OR LAND SURVEYOR'S STAMP OR EMBOSSED SEAL SHALL NOT BE CONSIDERED VALID, TRUE COPIES.